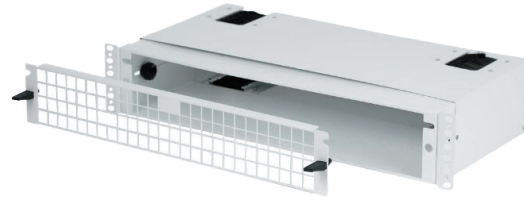


PASSIVE AIRFLOW MANAGEMENT

DCS airflow management products are designed to help reduce energy consumption by containing hot or cold air paths to and from switches that are mounted into deep cabinets.

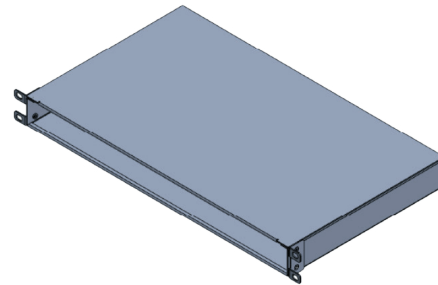
2U ADJUSTABLE DEPTH AIR DUCT

DCS 2U airflow ducts are designed to help reduce energy consumption by containing hot or cold air paths to and from switches that are mounted into deep cabinets. This keeps hot exhaust air from entering the switch causing them to overheat and potentially shut down. The removable front vent allows access to switch for replacing fan modules or power supplies without removing the duct. Brush baffles give access to cabling even with active switches.



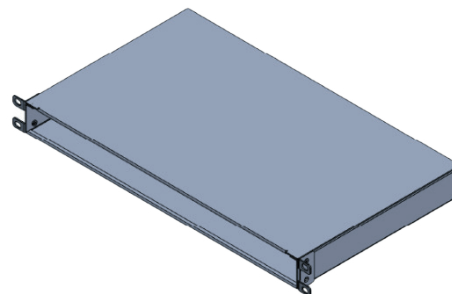
ARISTA 7280 R3 SERIES SWITCH AIR DUCT

DCS airflow ducts are designed to help reduce energy consumption by containing hot or cold air paths to and from switches that are mounted into deep cabinets. This keeps hot exhaust air from entering the switch causing them to overheat and potentially shut down. The open front allows access to replace fan modules or power supplies without removing the duct. They come in various rack units (RU), depths, and colors. DCS Air Ducts are RoHS compliant, aluminum construction, and welded for maximum air containment.



10.375" DEEP AIR DUCT

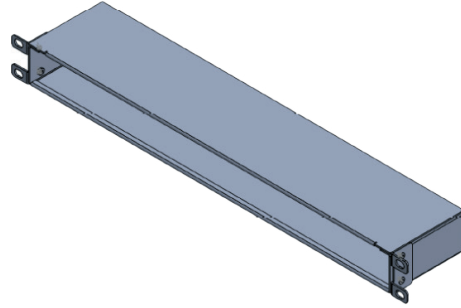
DCS airflow ducts are designed to help reduce energy consumption by containing hot or cold air paths to and from switches that are mounted into deep cabinets. This keeps hot exhaust air from entering the switch causing them to overheat and potentially shut down. The open front allows access to replace fan modules or power supplies without removing the duct. They come in various rack units (RU), depths, and colors. DCS Air Ducts are RoHS compliant, aluminum construction, and welded for maximum air containment.



Note: All pictures shown are for illustration purposes only. Actual product may vary due to product enhancement

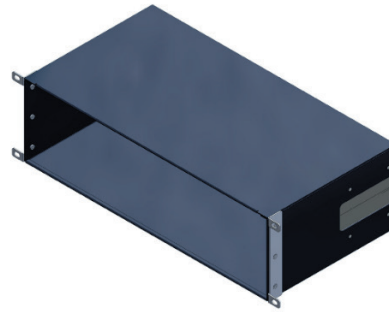
3.55" DEEP AIR DUCT

DCS airflow ducts are designed to help reduce energy consumption by containing hot or cold air paths to and from switches that are mounted into deep cabinets. This keeps hot exhaust air from entering the switch causing them to overheat and potentially shut down. The open front allows access to replace fan modules or power supplies without removing the duct. They come in various rack units (RU), depths, and colors. DCS Air Ducts are RoHS compliant, aluminum construction, and welded for maximum air containment.



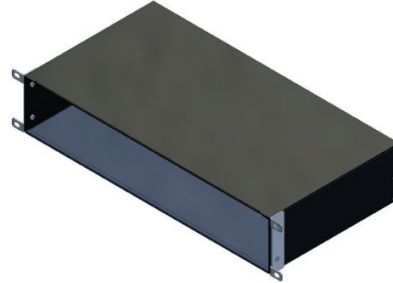
CISCO 9300 SERIES SWITCH AIR DUCT

DCS 3U airflow ducts are designed for 1U switches to contain hot or cold air paths to and from switches that are mounted into deeper cabinets. This keeps hot exhaust air from entering the switch and causes components to overheat or even shut down. Brush seals on the side and bottom give access to cabling.



2U REAR BRUSH SEAL OPEN AIR DUCT

DCS 2U airflow ducts are designed for 1U switches to contain hot or cold air paths to and from switches that are mounted into deeper cabinets. This keeps hot exhaust air from entering the switch and causes components to overheat or even shut down. Brush seals give access to cabling.



BRUSH SEAL FILLER PANEL

This filler panel was designed with a brush seal to allow cable entry/exit while blocking airflow between hot and cold isles. It mounts into an EIA standard 19" cabinet or frame. By having the brush seal on top, it can be mounted with existing cables in place. This keeps hot exhaust air from entering the switch and causes components to overheat or even shut down. Brush seals give access to cabling.



FIND OUT HOW DCS' CONNECTIVITY SOLUTIONS CAN IMPROVE YOUR COMPANY'S PERFORMANCE.

972-620-4997 | 1881 Valley View Lane, Dallas, Texas 75234 | salesupport@datacentersystems.com

Confidential: This document contains information of a proprietary nature to Data Center Systems. Any reproduction, use or dissemination of said information in whole or part without the express written consent to Data Center Systems is prohibited.

