

## 2U REAR BRUSH SEAL OPEN AIR DUCT

DCS 2U airflow ducts are designed for 1U switches to contain hot or cold air paths to and from switches that are mounted into deeper cabinets. This keeps hot exhaust air from entering the switch and causes components to overheat or even shut down. Brush seals give access to cabling.

### PRODUCT SPECIFICATIONS

#### Product Type

Air Duct

#### Product Series

Passive Airflow Management

#### Features & Benefits

- Mounts in 19-inch Rack
- Airflow Containment with Cable Access

#### Dimensions

Configuration	Height	Width	Depth
2U	3.47"	19.00"	9.00"

#### Colors

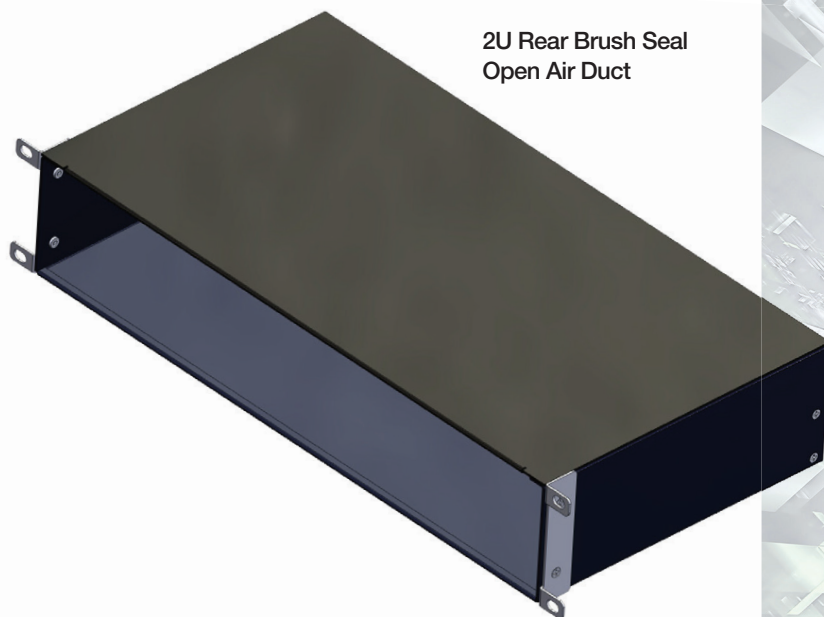
Black

(Other Colors Available Upon Request)

#### Available Configurations

Item Number	Configuration	Color*
752-0123-001	2U	Black

**Note:** All pictures shown are for illustration purposes only. Actual product may vary due to product enhancement.



FIND OUT HOW DCS' CONNECTIVITY SOLUTIONS CAN IMPROVE YOUR COMPANY'S PERFORMANCE.

972-620-4997 | 1881 Valley View Lane, Dallas, Texas 75234 | [salesupport@datacentersystems.com](mailto:salesupport@datacentersystems.com)

Confidential: This document contains information of a proprietary nature to Data Center Systems. Any reproduction, use or dissemination of said information in whole or part without the express written consent to Data Center Systems is prohibited.

