

2U ADJUSTABLE DEPTH AIR DUCT

DCS 2U airflow ducts are designed to help reduce energy consumption by containing hot or cold air paths to and from switches that are mounted into deep cabinets. This keeps hot exhaust air from entering the switch causing them to overheat and potentially shut down. The removable front vent allows access to switch for replacing fan modules or power supplies without removing the duct. Brush baffles give access to cabling even with active switches.

PRODUCT SPECIFICATIONS

Product Type

Air Duct

Product Series

Passive Airflow Management

Features & Benefits

- Mounts in 19-inch Rack
- Airflow Containment with Cable Access
- Removable Perforated Front Panel
- Rear Top and Bottom Brush Grommets
- Adjustable Depth
- 1U Rear Brush Baffle

Dimensions

Configuration	Height	Width	Depth
2U	3.47"	19.00"	8.50"-12.00"

Colors

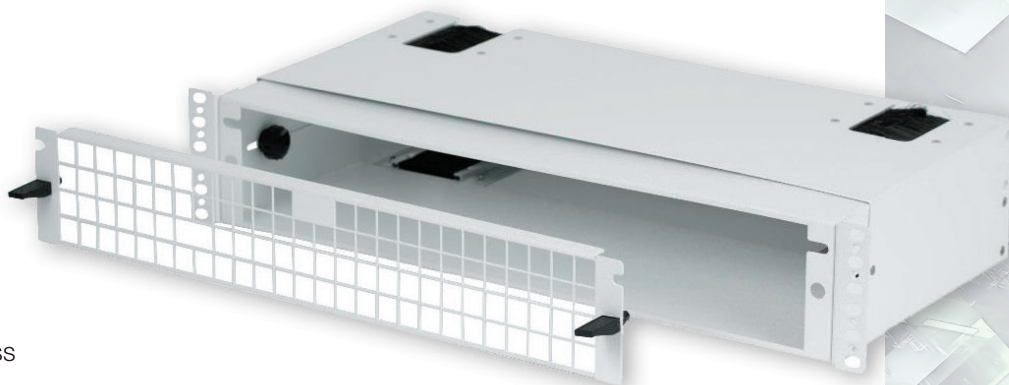
White (Other Colors Available Upon Request)

Available Configurations

Item Number	Configuration	Color*
692-0110-000	2U	White

*Other Colors Available Upon Request

Note: All pictures shown are for illustration purposes only. Actual product may vary due to product enhancement.



2U Adjustable
Depth Air Duct

FIND OUT HOW DCS' CONNECTIVITY SOLUTIONS CAN IMPROVE YOUR COMPANY'S PERFORMANCE.

972-620-4997 | 1881 Valley View Lane, Dallas, Texas 75234 | salesupport@datacentersystems.com

Confidential: This document contains information of a proprietary nature to Data Center Systems. Any reproduction, use or dissemination of said information in whole or part without the express written consent to Data Center Systems is prohibited.

